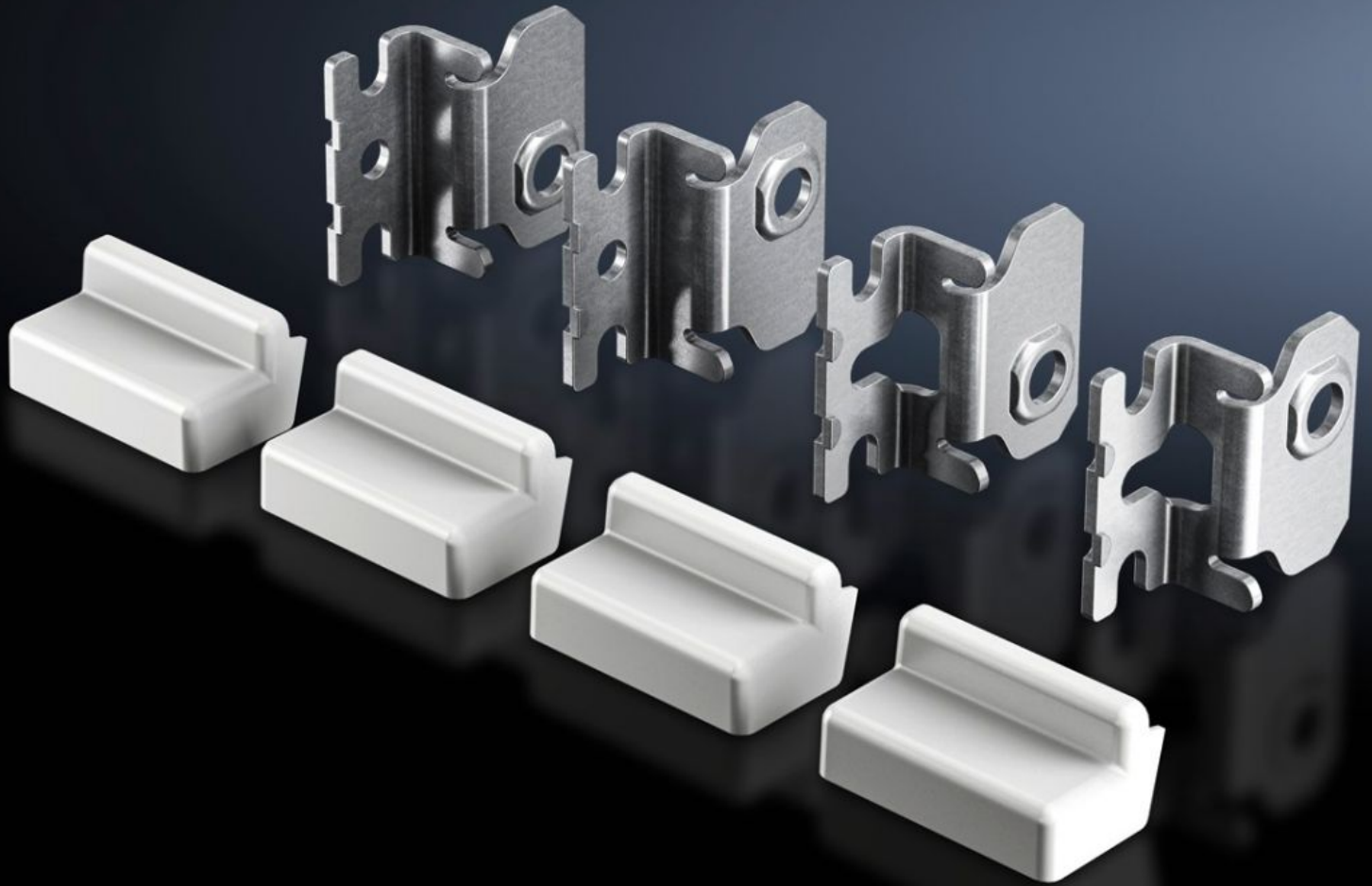


**Rittal – The System.**

Faster – better – everywhere.



**AX 2508.020**

**Wall mounting bracket**

State: 9/16/2022 (Source: [rittal.com/us-en](http://rittal.com/us-en))

ENCLOSURES

POWER DISTRIBUTION

CLIMATE CONTROL

IT INFRASTRUCTURE

SOFTWARE & SERVICES

FRIEDHELM LOH GROUP



# AX 2508.020 - Wall mounting bracket for AX carbon steel, KX carbon steel, AX IT EL

Ideal for convenient one-person assembly of wall-mounted enclosures, even in confined spaces.

## Features

Model No.	AX 2508.020
Product description	Ideal for convenient one-person assembly of wall-mounted enclosures, even in confined spaces.
Benefits	Screw-fastened directly from the rear with a self-tapping screw into the enclosure eyelet Simple location of the wall bracket on a pre-configured screw in the wall The wall mounting can be optimally adapted to the local conditions via various mounting positions As an alternative to a self-tapping screw, the holder can also be secured from the inside using a screw and nut Additional option for fastening with a nut for dynamic applications
Material	Carbon steel, zinc-plated
Supply includes	Wall mounting bracket Cover Caps Assembly components
Wall distance	20 mm 0.79 "
Type rating according to UL 50E	Type 1, 3R, 4, 12
Packaging unit	4 pc(s).
Weight/packaging unit	0.452 kg 1 lb.
Copper weight (kg per piece)	0
Customs tariff number	73182900
EAN	4028177938281
ETIM 7.0	EC002625

# Features

---

ECLASS 8.0

27189234

# Approvals

---

Approvals

DNV-GL

GOST

UL + C-UL - FTFA